

Woolpots Solar Farm

Public Presentation

13th July 2023





Lightrock & Econergy

Woolpots Solar Farm is a joint venture between Lightrock Power and Econergy. The team has delivered a number of successful operational projects that are providing clean energy to the grid. They focus on schemes that can be sensitively designed into the landscape, helping meet national and local authority renewable energy targets.

Lightrock

Lightrock develops ground mounted solar farms and storage solutions to provide cheap, renewable electricity to power a healthier society. They play close attention to three core pillars of environment, economy and ecology on each of their projects.

Econergy

Econergy, is an independent power producer that builds, owns and operates renewable energy projects across Europe. They are currently developing over 200 projects across 6 countries that would generate a total of 6.5 Gigawatts (GW) of renewable electricity.

Envams

A multi-disciplinary environmental consultancy supporting renewable energy developers on UK projects.

Why solar & storage development?

**Supports
local and
national
policy**

**Sustainable
form of
energy
production**

**Crucial in
the
transition to
a low
carbon
future**

**Provides
grid stability**

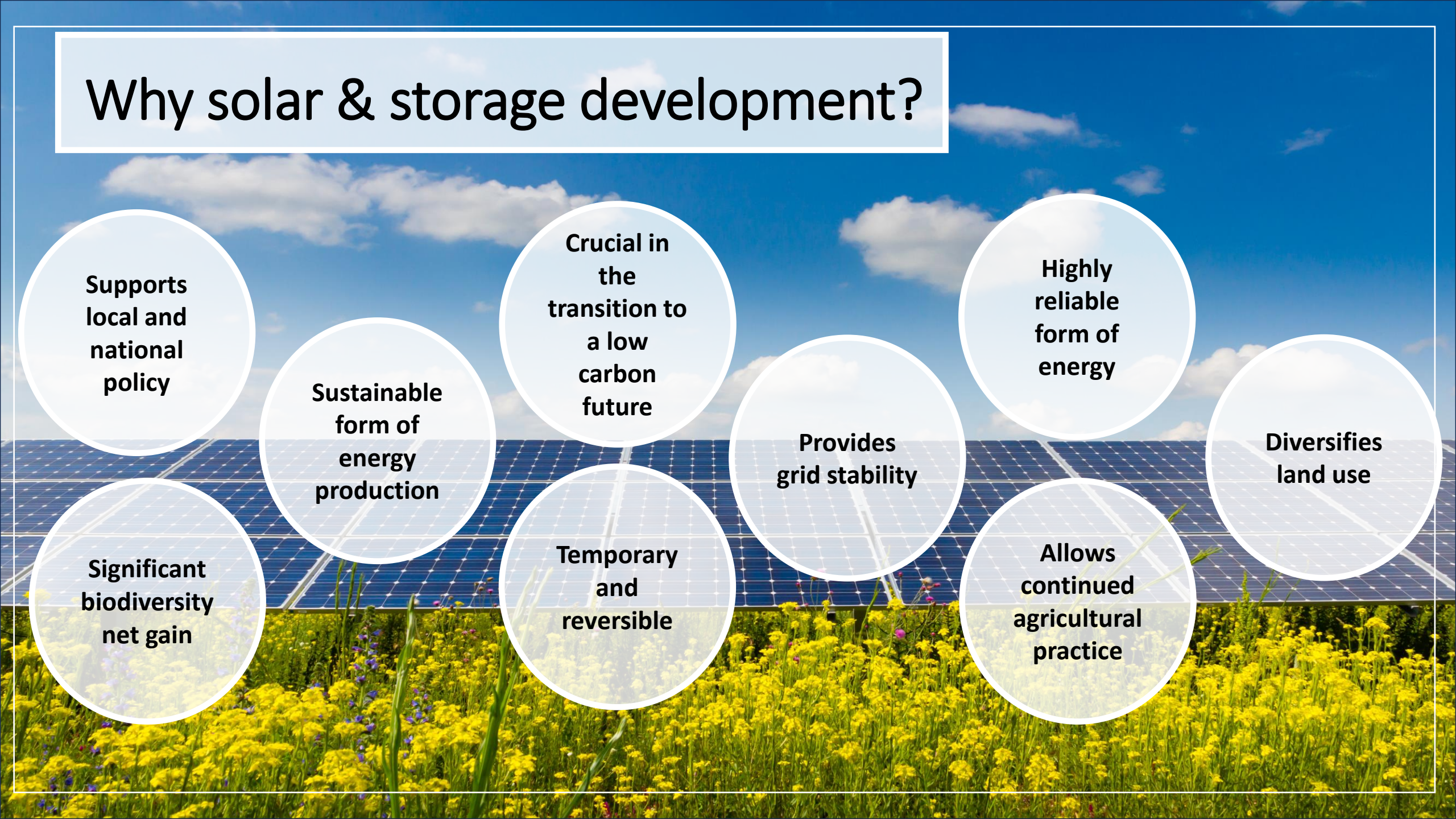
**Highly
reliable
form of
energy**

**Diversifies
land use**

**Significant
biodiversity
net gain**

**Temporary
and
reversible**

**Allows
continued
agricultural
practice**



Site Selection

Finding a good location takes time, we assess:

- Local planning designations and Local Council ambitions towards renewable energy and addressing climate change.
- Access and proximity to a substation or National Grid connection.
- Local environmental constraints through a thorough suite of environmental assessments and investigation.
- The topography of the land and how the project will sit in the local landscape.
- Irradiation levels that can be achieved at the Site.
- Road access to the Site.

This site meets all our requirements, which is why we're keen to progress a solar farm here.

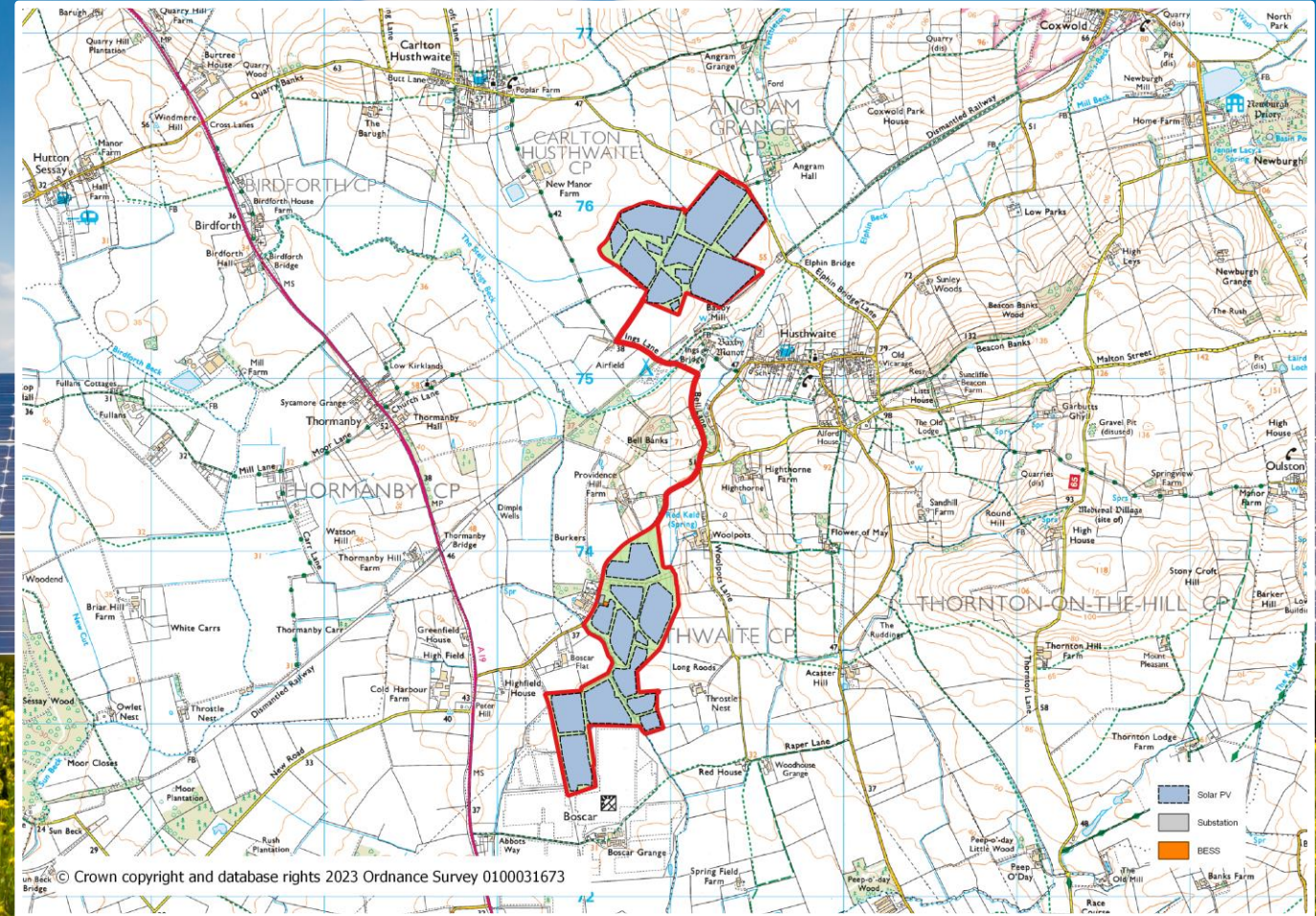
Woolpots Planning Application

December 2021 – January 2023

The previous planning application comprised **Woolpots North** and **Woolpots South**.

Concerns were raised at planning committee on:

- The use of agricultural land
- Aviation impacts
- The National Park, AONB and local landscape character
- Conservation areas and listed buildings

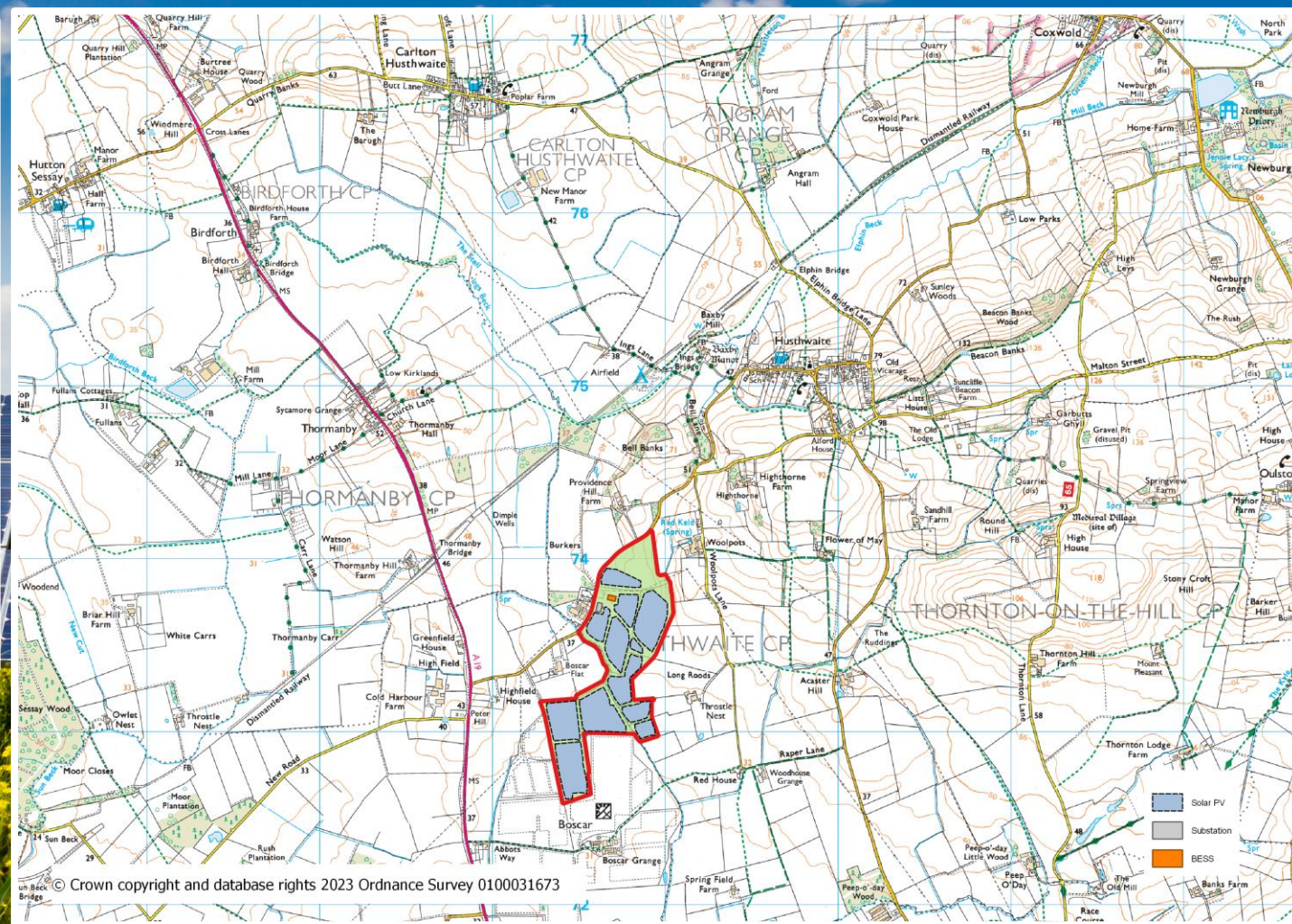


Woolpots Resubmission Layout

We listened to the feedback

Woolpots North has been removed from the proposals.

This change reduces or removes all of the key concerns raised in relation to the December 2021 application.

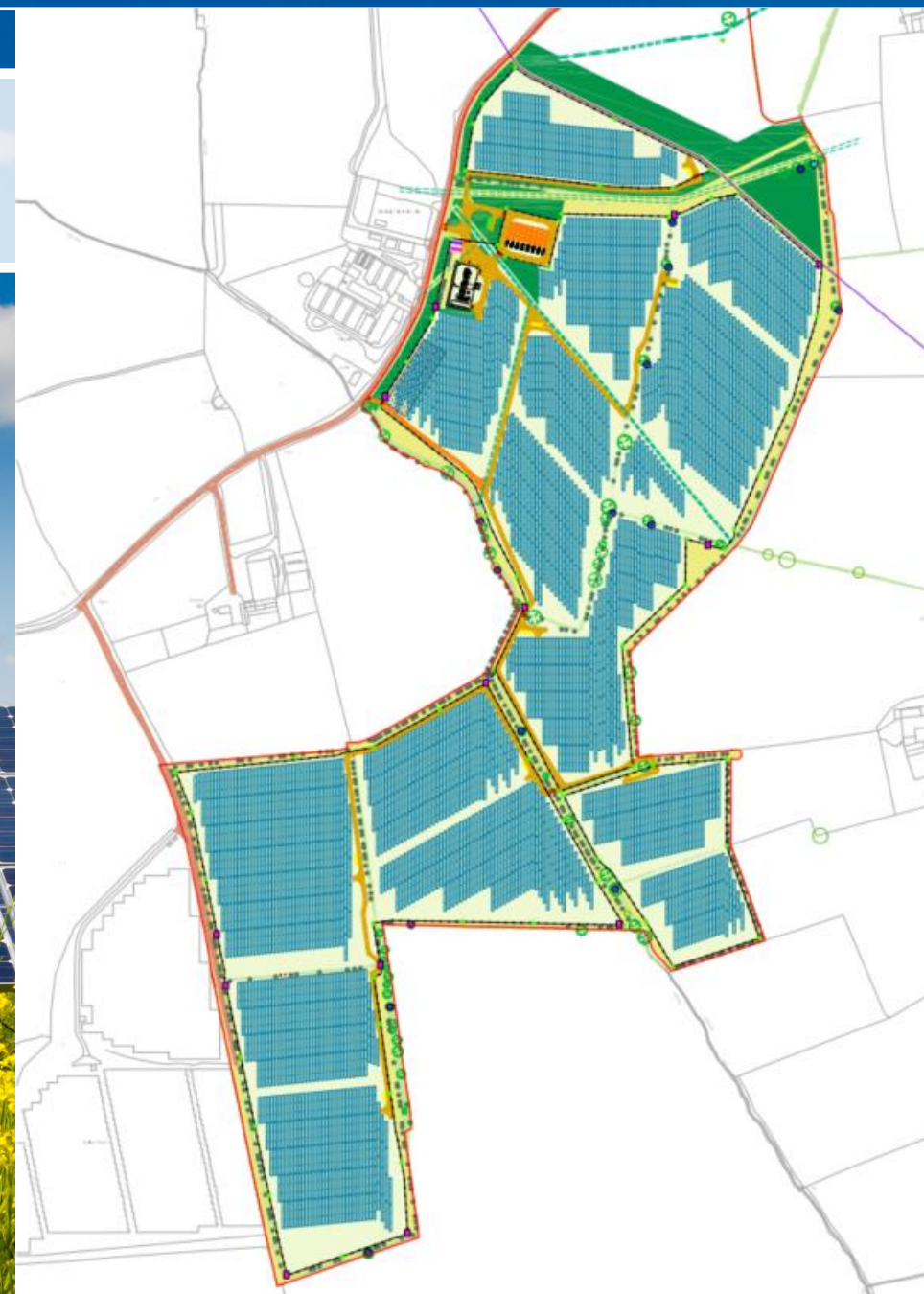


Woolpots Revised Layout

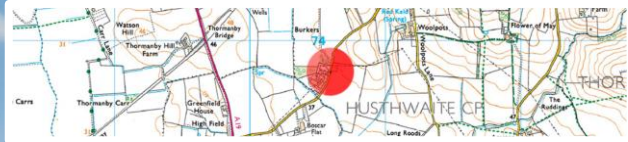
Our resubmission layout comprises **Woolpots South** only

We listened to the feedback and have revised our design:

- Located all solar PV areas on the lower ground to reduce visibility
- Include additional screening planting around the site entrance, and on the northern edge.
- Added a supplementary second access.



Viewpoints



Approximate Extent of Site (Woolpots South) Boundary within Frame



EXISTING PHOTOGRAPH - LEFTHAND

Approximate Extent of Site (Woolpots South) Boundary within Frame



EXISTING PHOTOGRAPH - RIFTHAND

		<p>Client: Wilson 5580 Contact: Liza Adams Date of Photograph: 18/04/2023</p>	<p>Site of Photograph: Hushwaite CE Project Name: Woolpots Solar Farm</p>	<p>Scale: 1:5000 Date of Issue: 18/04/2023 Drawing No: 01</p>	<p>Project Location: 55°58'00"N, 0°12'00"W Grid: OSGB 3600 Datum: OSGB 3600</p>		<p>These photographs are for the site and are not to be used for any other purpose.</p>	<p>WOOLPOTS SOLAR FARM</p>	<p>Viewpoint 1: Site entrance on Angleyarr</p>
--	--	---	--	---	---	--	---	----------------------------	---

Viewpoints

Approximate Extent of Site (Woolpots South) Boundary within Frame



EXISTING PHOTOGRAPH

<p>CREATED BY CADmando SPECIALISTS</p>	<p>CADMANO LIGHTROCK POWER</p>	<p>INFORMATION Client: Millam D&D Scale: 20mm Camera Height: 1.5m AGL Time of Photography: 16/08</p>	<p>INFORMATION Date of Photography: 08.07.21 Time of Photography: 09:00 Photographer: [Name] Paper Size: A4 (Half A1)</p>	<p>COORDINATES Viewpoint Location: 435437E, 481335N Contour Interval (ACD): 2.5m ACD Direction of View: 183° Distance to Site: 7180m</p>		<p>NOTES Popular recreational viewpoint with long views, North York Moors National Park, Catterline views.</p>	<p>PROJECT WOOLPOTS SOLAR FARM</p>	<p>DRAWING TITLE Viewpoint 12: The White Horse, North York Moors NP</p>
---	---	--	---	--	--	--	---	--



Environmental Enhancements



- Additional woodland block to the north of the Site.
- Additional hedge trees to be planted on the boundaries and at the site entrance.
- Planting of native species-rich grass and meadow mix underneath and around the solar panels.
- Provision of areas of bird cover crop to benefit a range of farmland species throughout the year.
- Bird boxes, bat boxes and mammal gates integrated into the design.
- Partnership with the RSPB

Community Benefits

- If the project is realised, a £100,000 community benefit fund will be set up.
- An additional £5,000 will be paid into the fund annually.
- The fund will support projects in the local community.





Q&A / Contact Us

We welcome any questions you might have about our revised proposals for Woolpots Solar Farm

www.lightrockpower.com



www.econergytech.com

Project email: woolpots@lightrockpower.com



Project website: www.woolpotssolarfarm.com